



From Models to FAIR Services: European Seismic Hazard Access in Geo-INQUIRE

14th Geo-INQUIRE online Seminar "EFEHR developments within Geo-INQUIRE"
22/01/2026

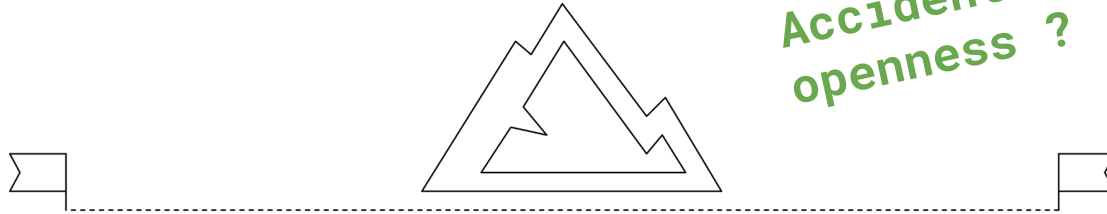
Noemi Romano (ETHZ)



Where we started

Services Up and
Running but...

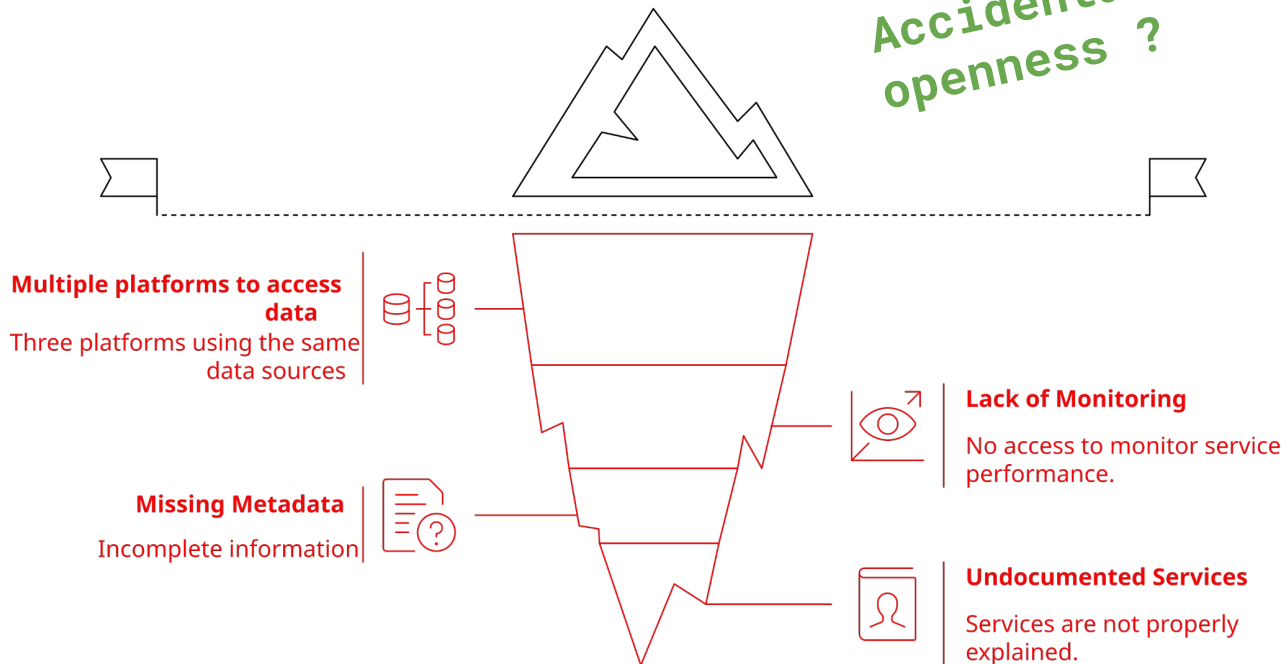
*Accidental
openness ?*



Where we started

Services Up and Running but...

Accidental openness ?



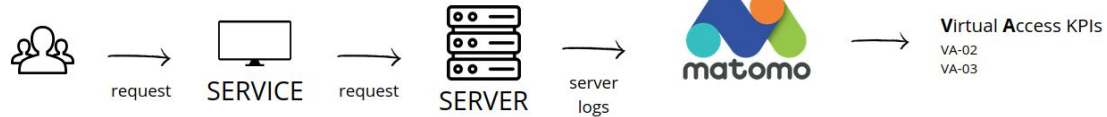
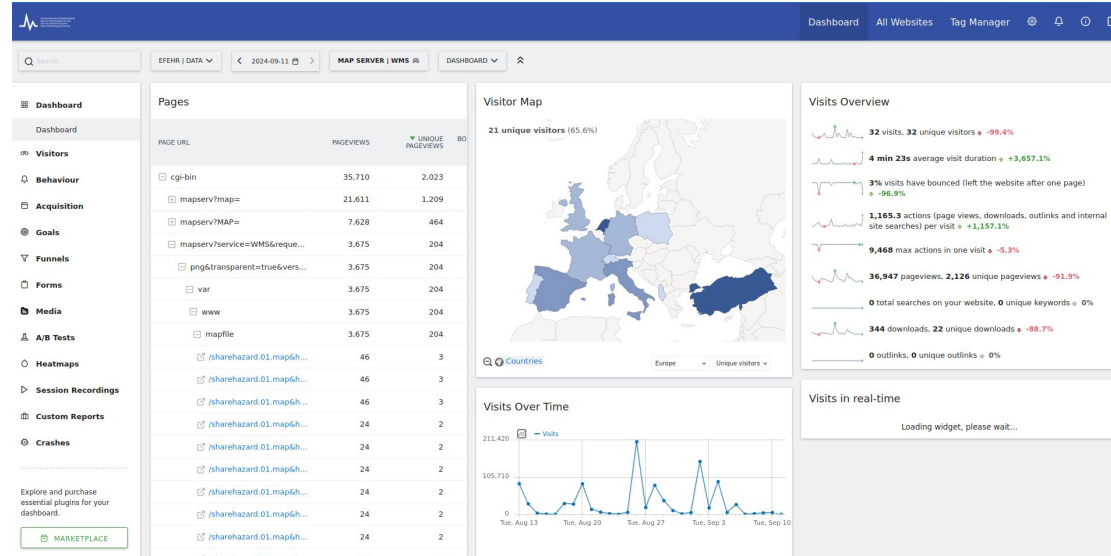
KPIs

Progress Highlights:

- KPIs now **systematically** collected and tracked (Server logs and Matomo)
- User behaviour: how people/institutions use our services (and machines 🤖)

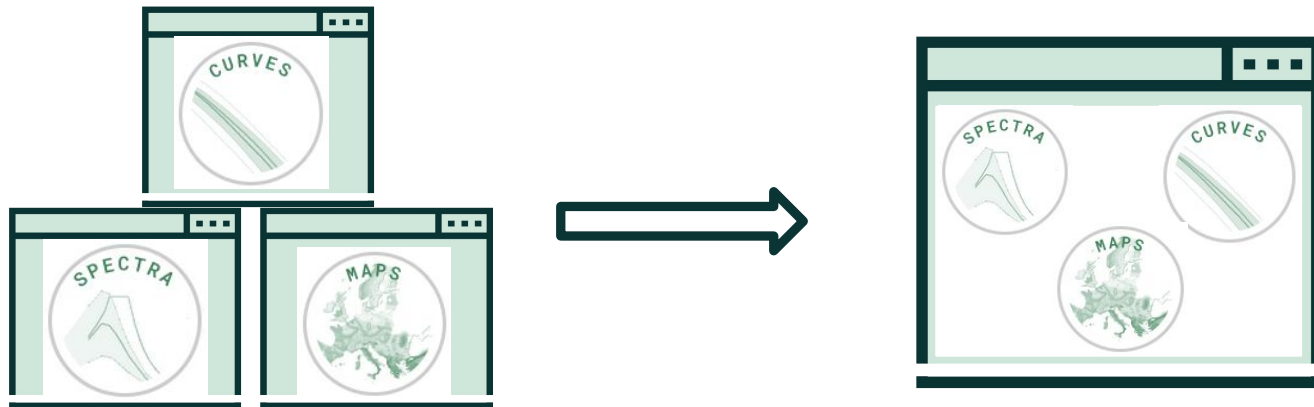
Key events:

- **Dec 2024:** Geo-INQUIRE workshop on logging systems for monitoring service/portal usage
- **June 2025:** KPI & FAIRness workshop for WP3



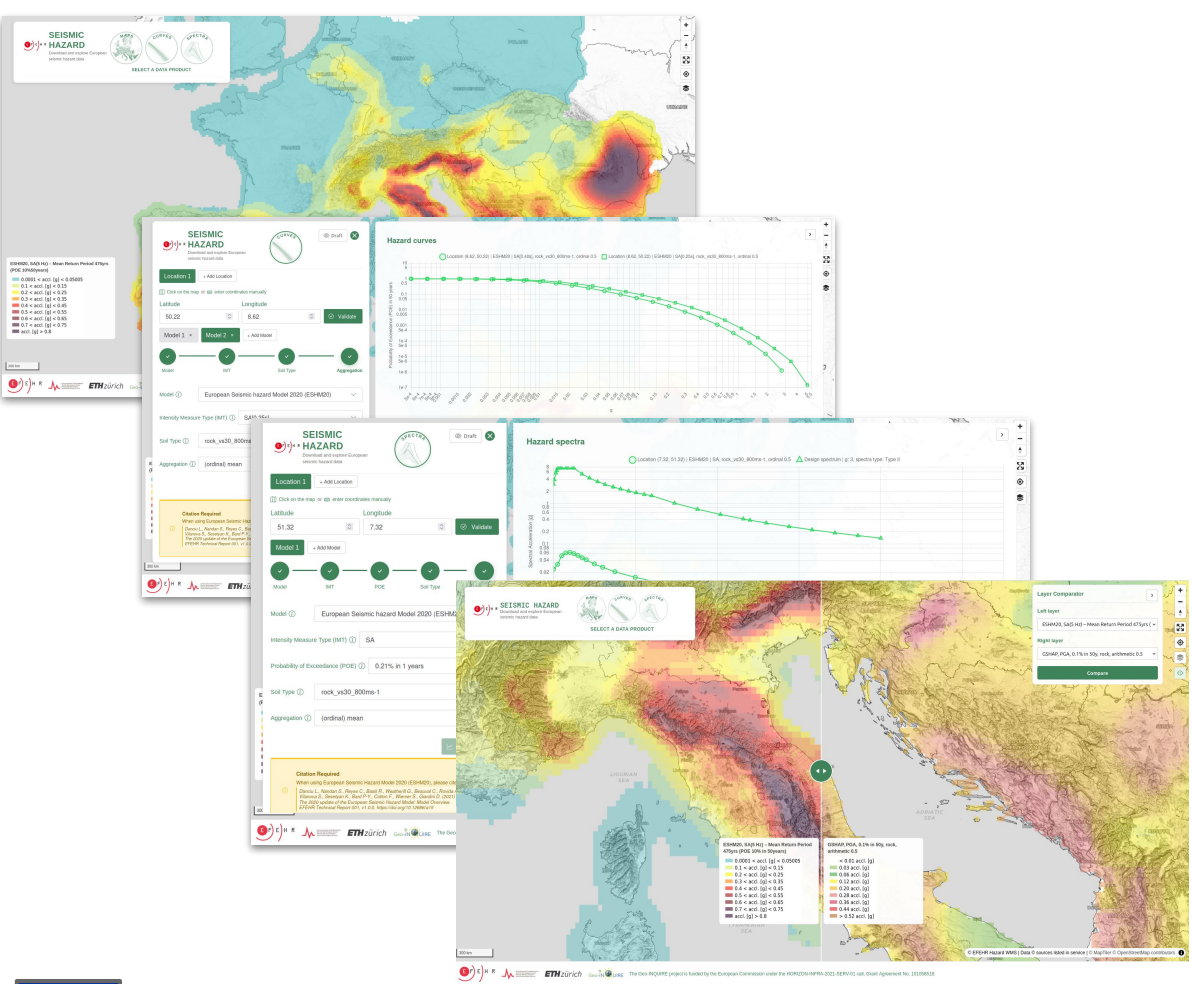
Modernization of EFEHR Hazard geoportal

Objective: Upgrade to modern stack and centralize all hazard data into **one unified platform** to improve data **accessibility** and **user experience**



WEB COMPONENTS





Beta phase : help us make it better !

efehrmaps.ethz.ch/hazard/

noemi.romano@sed.ethz.ch



From Accidental to Intentional Openness



Multiple platforms to access data
Three platforms using the same data sources

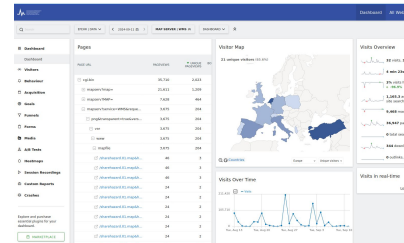
Missing Metadata
Incomplete information



Lack of Monitoring
No access to monitor service performance.



Undocumented Services
Services are not properly explained.



DOI 10.12686/a15 License CC BY 4.0 Report Download ↓



	Score earned:	Fair level:
Findable:	7 of 7	○ advanced
Accessible:	7 of 7	○ advanced
Interoperable:	4 of 6	○ moderate
Reusable:	5 of 6	○ moderate



Where we stand

- ~~Accidental~~ **Intentional** openness
- Unified data access platform (beta phase)
- Unified DOI
- Standardized workflows for new services
- Beyond data: open space to share knowledge (annual meetings, workshops, seminars, summer schools...)

Geo-INQUIRE : the framework to do it right



Thank you !

